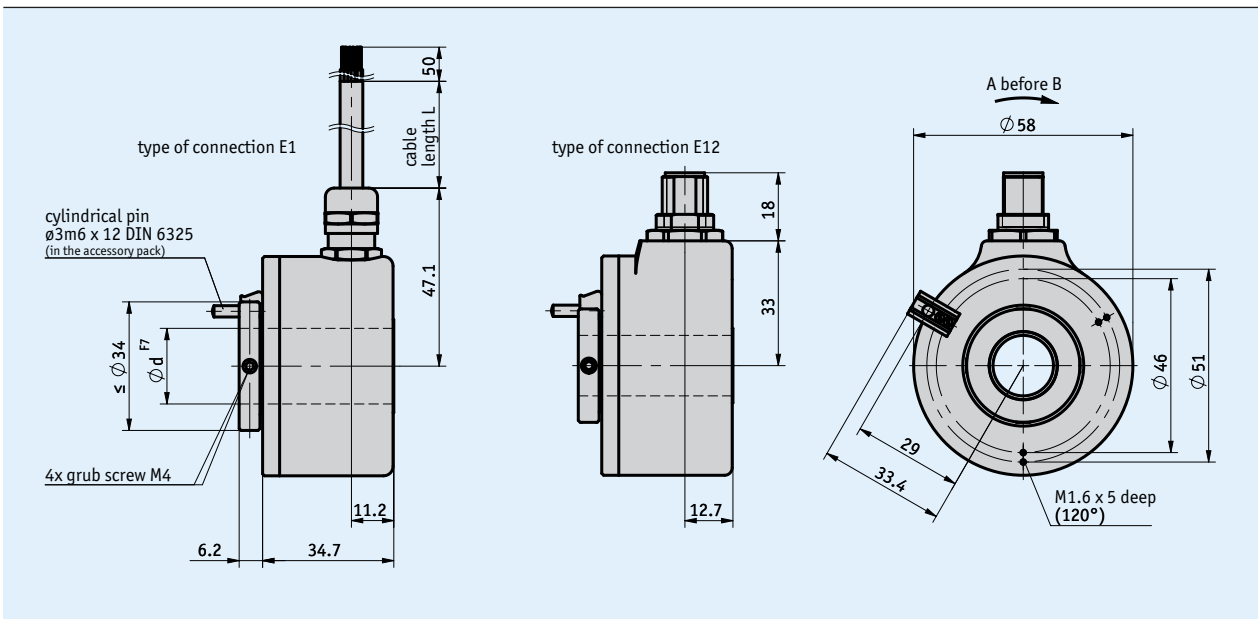


Profile

- Resolution max. 5000 pulses/revolution
- Through hollow shaft up to max. $\varnothing 28$ mm
- M12 or cable connection



Mechanical data

Feature	Technical data	Additional information
Shaft	steel	
Housing	aluminum	
Speed	≤ 2500 rpm	
Moment of inertia	$\sim 3.5 \times 10^{-6}$ kgm ²	
Starting torque	< 0.1 Nm at 20 °C	
Cable sheath	PVC	$\varnothing 4.5$ mm
Cable bending radius	27 mm	static
	68 mm	dynamic
Weight	~ 0.4 kg	

Electrical data

■ OP output circuit

Feature	Technical data	Additional information
Operating voltage	8 ... 30 V DC	reverse polarity protected, the power-supply unit corresponds to Class 2 (UL 1310)
Current consumption	typical 40 mA	≤100 mA (no load)
Output signal level high	≥UB - 3.0 V	short-circuit proof
Output signal level low	≤2.5 V	short-circuit proof
Pulse frequency	≤200 kHz	
Load	±40 mA	max. adm.
Type of connection	open cable end 1x M12 connector	8-pole, 1x pin

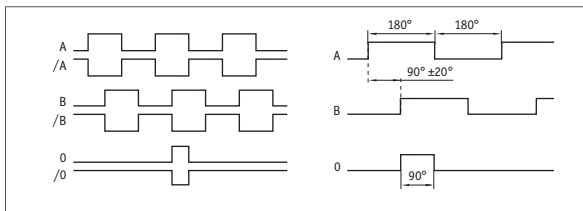
■ LD5 output circuit

Feature	Technical data	Additional information
Operating voltage	5 V DC	reverse polarity protected, the power-supply unit corresponds to Class 2 (UL 1310)
Current consumption	typical 40 mA	≤90 mA (no load)
Output signal level high	≥2.5 V	short-circuit proof
Output signal level low	≤0.5 V	short-circuit proof
Pulse frequency	≤300 kHz	
Load	±20 mA	max. adm.
Type of connection	open cable end 1x M12 connector	8-pole, 1x pin

■ LD24 output circuit

Feature	Technical data	Additional information
Operating voltage	8 ... 30 V DC	reverse polarity protected, the power-supply unit corresponds to Class 2 (UL 1310)
Current consumption	typical 40 mA	≤90 mA (no load)
Output signal level high	≥2.5 V	short-circuit proof
Output signal level low	≤0.5 V	short-circuit proof
Pulse frequency	≤300 kHz	
Load	±20 mA	max. adm.
Type of connection	open cable end 1x M12 connector	8-pole, 1x pin

■ signal pattern



System data

Feature	Technical data	Additional information
Approval	UL	UL 61010-1, File No. E503367

■ Characteristics of functional safety

Feature	Technical data	Additional information
MTTFd	63.4 year(s)	

Ambient conditions

Feature	Technical data	Additional information
Ambient temperature	-20 ... 70 °C	at speed $\leq 2000 \text{ min}^{-1}$
	-20 ... 60 °C	at speed $\leq 2500 \text{ min}^{-1}$
EMC	EN 61000-6-2	interference resistance / immission
	EN 61000-6-3	emitted interference / emission
Safety regulations	UL 61010-1	Indoor use, outdoor use possible, not intended for use involving direct exposure to UV light. Environment dry / wet. Protection class III as per EN 61140. Pollution degree 2 as per EN 61010. Maximum humidity 93% at 40 °C.
Protection category	IP64	EN 60529 (protection type not yet reviewed by UL)
Shock resistance	1000 m/s^2 , 6 ms	EN 60068-2-27
Vibration resistance	100 m/s^2 , 35 ... 2000 Hz	EN 60068-2-6

Pin assignment

Signal	E1	E12
GND	white	1
+UB	brown	2
A	green	3
/A	yellow	4
B	gray	5
/B	pink	6
0	blue	7
/0	red	8

Order

Ordering table

Feature	Ordering data	Specification	Additional information
Pulses/revolution	... A	50, 100, 125, 250, 400, 500, 512, 1000, 1024, 2000, 2048, 5000	
Type of connection	E1	open cable ends	
	E12	plug	
Cable length	... C	01.0, 03.0 in m	only with E1
	OK	without	only with E12
Output circuit	OP	push-pull with inversion	
	LD5	LineDriver, 5 V	
	LD24	LineDriver, 8 ... 30 V	
Hollow shaft/diameter	... E	16, 20, 24, 28 in mm	

Order key

IH5828 - **ABO** - **A** - **B** - **C** - **D** - **E**

Scope of delivery: IH5828, Quick Start Guide

Accessories:

Electronic display MA10/4

www.siko-global.com

Electronic display MA48

www.siko-global.com

Electronic display MA55

www.siko-global.com

Cable extension KV08S2

www.siko-global.com

Mating Connector Overview

www.siko-global.com

Mating connector, 8-pole, socket

Order key 83525